



# SAILING INSTRUCTIONS

## Rumgatta Regatta

October 05, 2019

Organized by

Tampa Sailing Squadron, Apollo Beach, Florida

## Spinnaker and Non-Spinnaker

### 1 RULES

The series will be governed by the rules as defined in *The Racing Rules of Sailing, 2017-2020*.

### 2 NOTICES TO COMPETITORS

Notices to competitors will be posted on the official notice board located by the flagpole at TSS.

### 3 CHANGES TO SAILING INSTRUCTIONS

- 3.1 Any change to the sailing instructions will be posted before 0800 on Friday, October 4, or communicated verbally on the water.
- 3.2 In case of the possibility of severe weather, all inquiries should be made to TSS at 813-645-8377.

### 4 SIGNALS MADE ASHORE

- 4.1 Signals made ashore will be displayed from the flagpole at TSS.
- 4.2 When flag AP is displayed ashore, '1 minute' is replaced by 'not less than 45 minutes'. This changes RRS Race Signal AP.

### 5 RACING AREAS

Racing areas will be on Hillsborough Bay near Apollo Beach.

### 6 CHECK-IN

All boats shall pass the stern of the Short Course race committee signal boat, on starboard tack, at least 10 minutes before the Warning Signal, and hail their boat name, sail number, and division or class. VHF check-in is not available.

NOTE: The Lima flag, "come within hail" will NOT be displayed for this purpose. If the Lima flag is displayed, it will be for a different message, such as a change in the Sailing Instructions.

### 7 RECALLS

- 7.1 When an individual recall is signaled, the race committee will attempt to hail boats that are OCS. The timing and order, or omission, of such hails or the failure of a boat to hear a hail will not be considered an improper action or omission of the race committee under rule 62.1.

### 8 PENALTY SYSTEM

- 8.1 In all classes the Scoring Penalty of rule 44.3 will replace all Turns Penalties. To accept a Scoring Penalty, a boat must promptly display a yellow flag, and call the race committee's attention to it upon finishing.

### 9 PROTESTS AND REQUESTS FOR REDRESS

- 9.1 In addition to the requirements of rule 61.1, a boat intending to protest shall inform the race committee upon finishing or retiring of its intention to protest.
- 9.2 Protest forms are available at TSS.
- 9.3 Protests and requests for redress shall be hand-delivered no later than One Hour after the Short Course RC Signal Boat docks, to either Principal Race Officer Henry Morse (863-838-1268) or Regatta Chair Gary Mull (813-445-2050).
- 9.2 Parties and witnesses will be notified of the date, time, and place of the hearing.

### 10 SAFETY REGULATIONS

- 10.1 Any boat who challenges a vessel confined to the Tampa Bay shipping channels in such a way as to cause them to file a report, or who violates a moving or static safety or security zone resulting in the filing of a report, will be disqualified. This changes rule 63.1.
- 10.2 A competitor who intentionally puts trash in the water may be protested by other boats or the race committee.

## 11 RADIO COMMUNICATIONS

- 11.1 The race committee will monitor VHF channel 68.
- 11.2 A boat leaving the racing area before finishing shall notify the race committee signal vessel over VHF, hailing her name, sail number, and division or class, and receive acknowledgment from the race committee.
- 11.3 Except in an emergency, a boat shall neither make radio transmissions while racing nor receive radio communications not available to all boats. This restriction also applies to mobile telephones.

## 12 PRIZES

Prizes will be presented on Saturday evening. Final results will be posted after any protest hearings. The final results may affect the awarded prizes.

## 13 SCHEDULE OF RACES

- 13.1 The first **Start** is at 1100. (Warning Signal at 1055)
- 13.2 Three or more races are scheduled.

## 15 COURSES AND MARKS

- 15.1 The diagram below shows the course, and on which side to leave the mark.
- 15.2 The course is once-around. Start, windward mark, finish.
- 15.2 The starting pin will be an inflatable mark.

## 16 THE START

- 16.1 The starting line will be between a staff displaying an orange flag on the Short Course signal vessel at the starboard end, and the course side of the port end starting mark.
- 16.2 The starting line will be located within sight and generally westerly of the channel exiting TSS.
- 16.3 The Class Flag for this group is the # 1 pennant.

## 17 THE FINISH

The finish line will be between a staff displaying an orange flag on the Short Course signal vessel and the course side of the finishing mark.

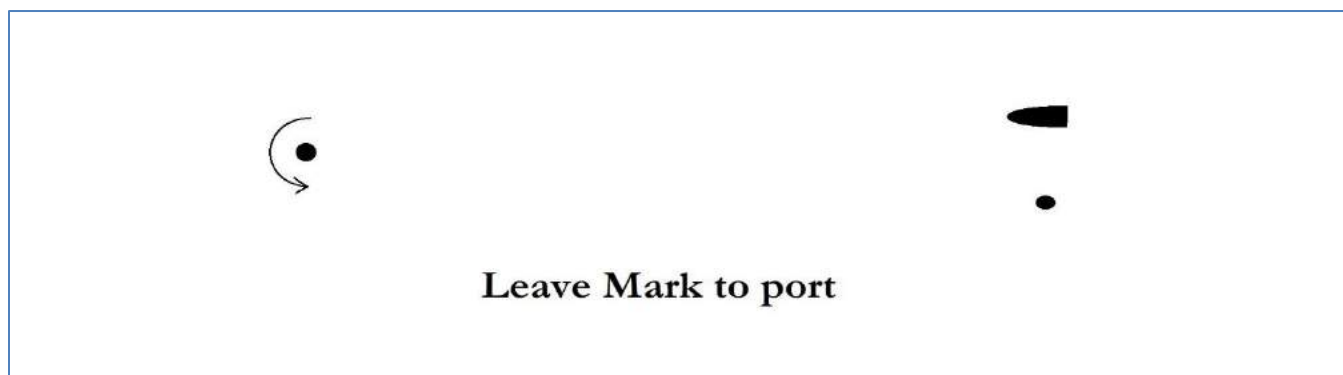
## 18 TIME LIMIT

- 18.1 If no boat in a class or division has passed the first mark within 60 minutes from the Start, the race will be abandoned.
- 18.2 The time limit for the first boat in a class or division to sail the course and finish is 120 minutes.
- 18.3 Boats still racing more than 30 minutes after the first boat in her class or division has finished, will be scored DNF. This changes RRS 35 and A5.

## 19 SCORING

- 19.1 PHRF time-on-distance will be used to calculate scores.

Number 1 pennant – Class Flag for this group:





# SAILING INSTRUCTIONS

## Rumgatta Regatta

October 05, 2019

Organized by

Tampa Sailing Squadron, Apollo Beach, Florida

## Racer-Cruiser and Doublehand

### 1 RULES

The series will be governed by the rules as defined in *The Racing Rules of Sailing, 2017-2020*.

### 2 NOTICES TO COMPETITORS

Notices to competitors will be posted on the official notice board located by the flagpole at TSS.

### 3 CHANGES TO SAILING INSTRUCTIONS

- 3.1 Any change to the sailing instructions will be posted before 0800 on Friday, October 4, or communicated verbally on the water.
- 3.2 In case of the possibility of severe weather, all inquiries should be made to TSS at 813-645-8377.

### 4 SIGNALS MADE ASHORE

- 4.1 Signals made ashore will be displayed from the flagpole at TSS.
- 4.2 When flag AP is displayed ashore, '1 minute' is replaced by 'not less than 45 minutes'. This changes RRS Race Signal AP.

### 5 RACING AREAS

Racing areas will be on Hillsborough Bay near Apollo Beach.

### 6 CHECK-IN

All boats shall pass the stern of the Long Course race committee signal boat, on starboard tack, at least 10 minutes before the Warning Signal, and hail their boat name, sail number, and division or class. VHF check-in is not available.

NOTE: The Lima flag, "come within hail" will NOT be displayed for this purpose. If the Lima flag is displayed, it will be for a different message, such as a change in the Sailing Instructions.

### 7 RECALLS

- 7.1 When an individual recall is signaled, the race committee will attempt to hail boats that are OCS. The timing and order, or omission, of such hails or the failure of a boat to hear a hail will not be considered an improper action or omission of the race committee under rule 62.1.

### 8 PENALTY SYSTEM

- 8.1 In all classes the Scoring Penalty of rule 44.3 will replace all Turns Penalties. To accept a Scoring Penalty, a boat must promptly display a yellow flag, and call the race committee's attention to it upon finishing.

### 9 PROTESTS AND REQUESTS FOR REDRESS

- 9.1 In addition to the requirements of rule 61.1, a boat intending to protest shall inform the race committee upon finishing or retiring of its intention to protest.
- 9.2 Protest forms are available at TSS.
- 9.3 Protests and requests for redress shall be hand-delivered no later than One Hour after the RC Signal Boat docks, to either Principal Race Officer Henry Morse (863-838-1268) or Regatta Chair Gary Mull (813-445-2050).
- 9.2 Parties and witnesses will be notified of the date, time, and place of the hearing.

### 10 SAFETY REGULATIONS

- 10.1 Any boat who challenges a vessel confined to the Tampa Bay shipping channels in such a way as to cause them to file a report, or who violates a moving or static safety or security zone resulting in the filing of a report, will be disqualified. This changes rule 63.1.
- 10.2 A competitor who intentionally puts trash in the water may be protested by other boats or the race committee.

## 11 RADIO COMMUNICATIONS

- 11.1 The race committee will monitor VHF channel 68.
- 11.2 A boat leaving the racing area before finishing shall notify the race committee signal vessel over VHF, hailing her name, sail number, and division or class, and receive acknowledgment from the race committee.
- 11.3 Except in an emergency, a boat shall neither make radio transmissions while racing nor receive radio communications not available to all boats. This restriction also applies to mobile telephones.

## 12 PRIZES

Prizes will be presented on Saturday evening. Final results will be posted after any protest hearings. The final results may affect the awarded prizes.

## 13 SCHEDULE OF RACES

- 13.1 The **Start** is at 1000. (Warning Signal at 0955)
- 13.2 One race is scheduled.

## 14 (not used)

## 15 COURSES AND MARKS

- 15.1 The diagrams in the attachment show the courses, including the approximate angles between legs, the order in which marks are to be passed, and side on which each mark is to be left, with one exception.
- 15.2 Exception: TSS mark "x", the first mark after the start, shall be left to port if the RC displays a red shape, or to starboard if a green shape is displayed.
- 15.3 The course to be sailed will be announced at the competitors meeting, posted on the notice board and displayed at the stern of the signal vessel.
- 15.4 The starting mark will be an inflatable mark.

## 16 THE START

- 16.1 The starting line will be between a staff displaying an orange flag on the Long Course signal vessel at the starboard end, and the course side of the port end starting mark.
- 16.2 The starting line will be located 0.25 nm directly downwind of TSS mark "x". That means it will be somewhere on the dashed circle shown on the courses (attached) around mark "x", in whatever location on that circle that makes it directly downwind of mark "x".
- 16.3 The Class Flag for this group is the # 2 pennant.

## 17 THE FINISH

The finish line will be between a staff displaying an orange flag on the Long Course signal vessel and the course side of the finishing mark, which is the last mark of the course.

## 18 TIME LIMIT

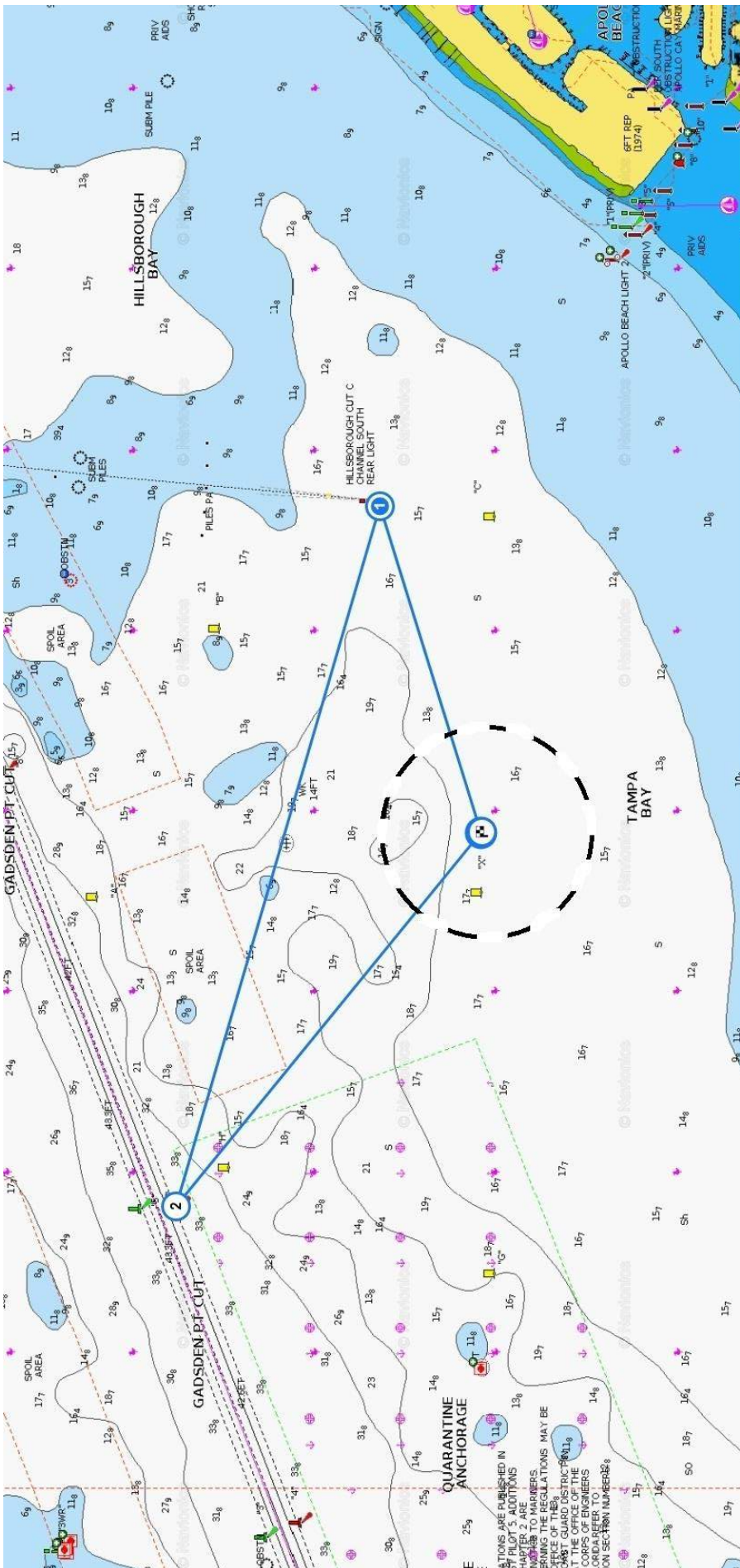
- 18.1 The time limit for all boats to sail the course and finish is 1700.
- 18.3 Boats still racing after 1700 will be scored DNF. This changes rules 35 and A5.

## 19 SCORING

- 19.1 PHRF time-on-distance will be used to calculate individual starting times.
- 19.2 Unless the course is shortened, each boat's score will be the order she finishes.
- 19.3 If the course is shortened, corrected finish times and order will be calculated using the shortened course length.

Number 2 pennant – Class Flag for this group:





**COURSE A**

**Total Course: 4.45 nm.**

**[Start]** RC boat and Starting Pin located on dashed circle 0.25 nm downwind of Checkered Flag.

**[Checked Flag]** TSS "x" Mark (27.782223, -82.470332). First Mark after Start. Due windward of Starting Line.

Leave Mark to Port if RC displays red shape, or Stbd if green.

**[1]** Range Tower – Cut "C", southbound, rear tower (27.786606, -82.450836). Leave to Port.

**[2]** Channel Marker - Gadsden Pt. #6, red, flshg, 4 secs (27.795524, -82.485984). Leave to Port.

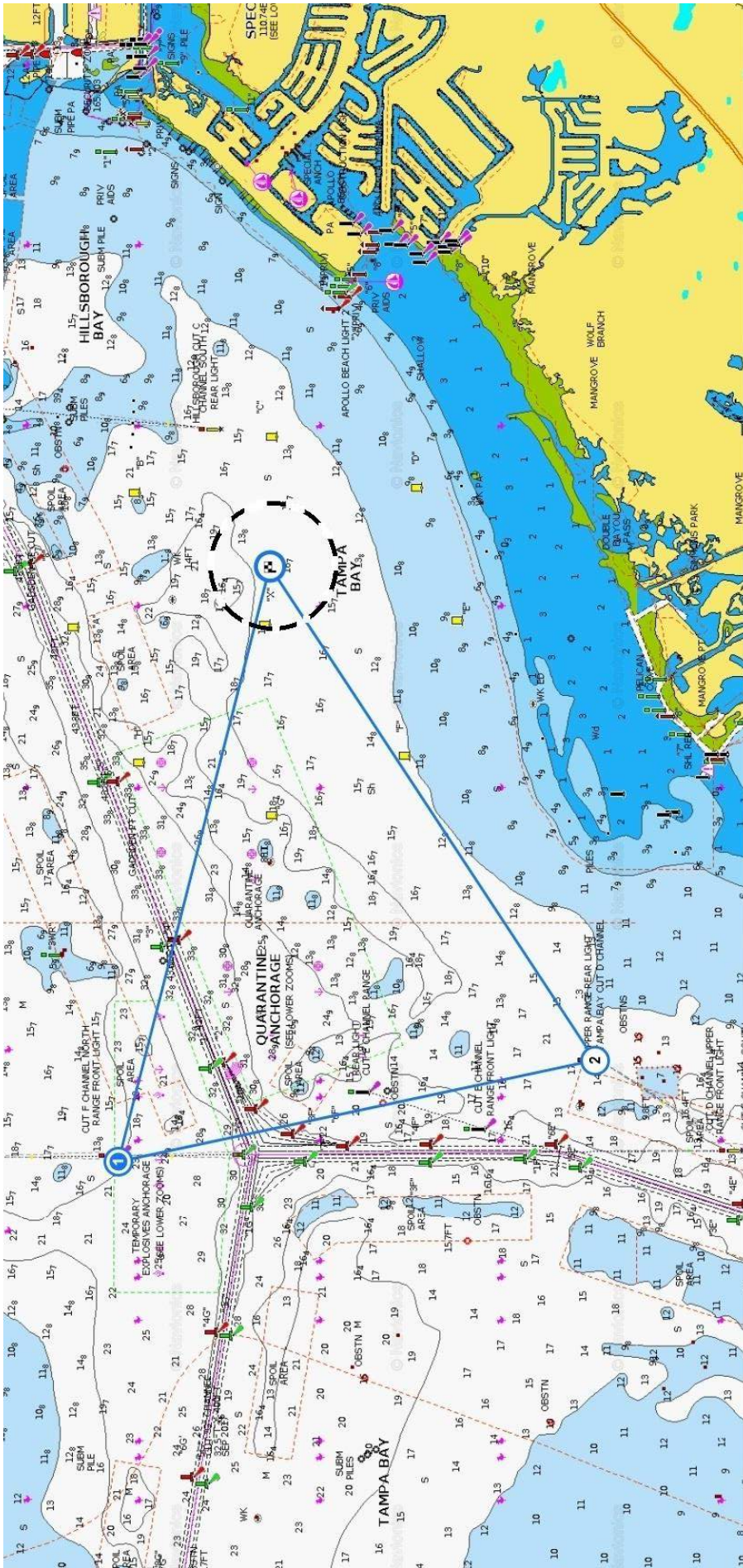
**[Checked Flag]** TSS "x" Mark (27.782223, -82.470332). Finish line.

Leg: 0.25 nm.

Leg: 1.1 nm.

Leg: 1.9 nm.

Leg: 1.2 nm.



**COURSE B**

Total Course: 8.65 nm.

- Leg: 0.25 nm.
- Leg: 2.9 nm.
- Leg: 2.6 nm.
- Leg: 2.9 nm.

[Start] RC boat and Starting Pin located on dashed circle 0.25 nm downwind of Checkered Flag.

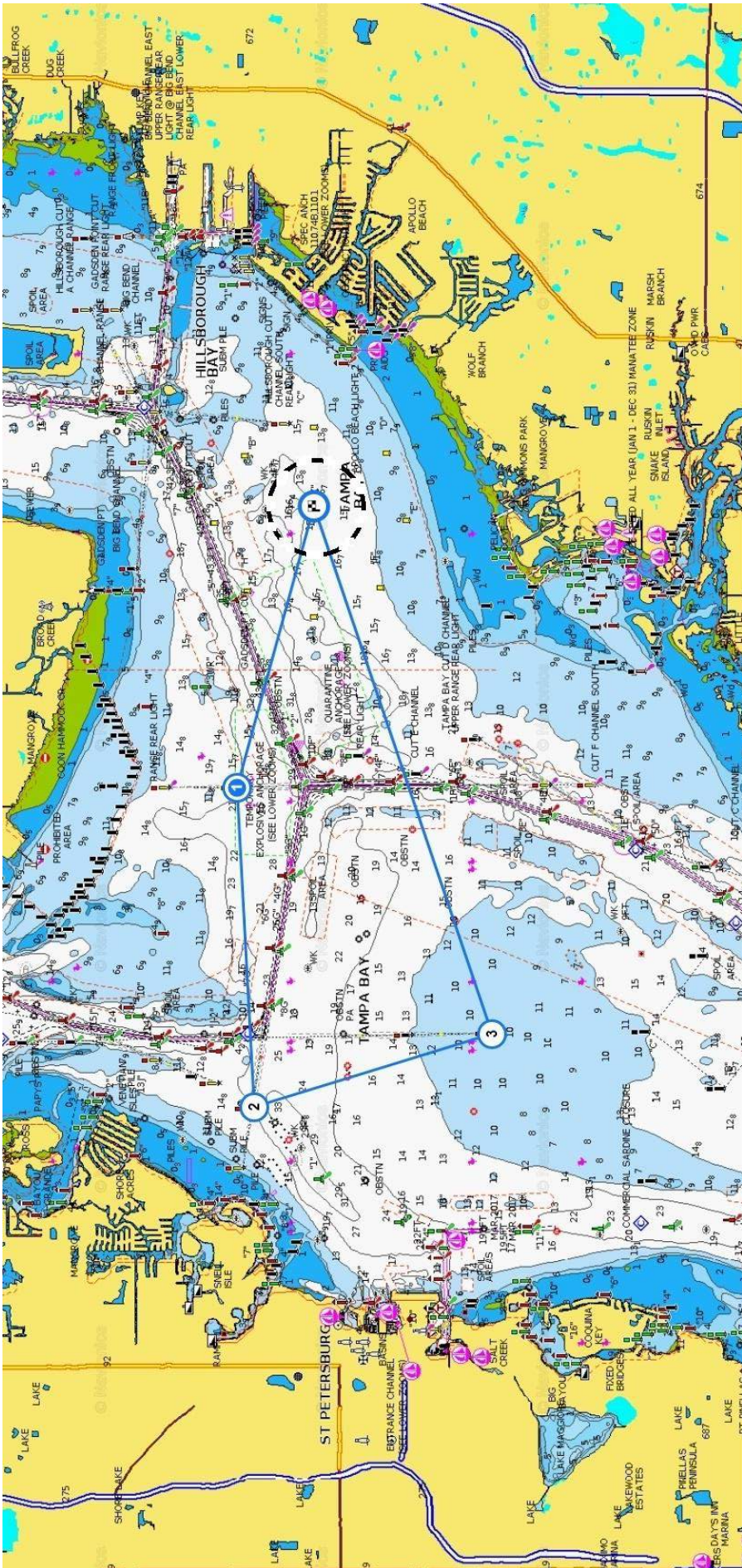
[Checkered Flag] TSS "x" Mark (27.782223, -82.470332) First Mark after Start. Due windward of Starting Line.

Leave Mark to Port if RC displays red shape, or S/bd if green.

[1] Range Tower - Cut "F", northbound, front tower (27.795491, -82.523182). Leave to Port.

[2] Range Tower - Cut "D", northbound, rear tower (27.753358, -82.513617). Leave to Port.

[Checkered Flag] TSS "x" Mark (27.782223, -82.470332). Finish line.



**COURSE C**

**Total Course: 14.95 nm.**

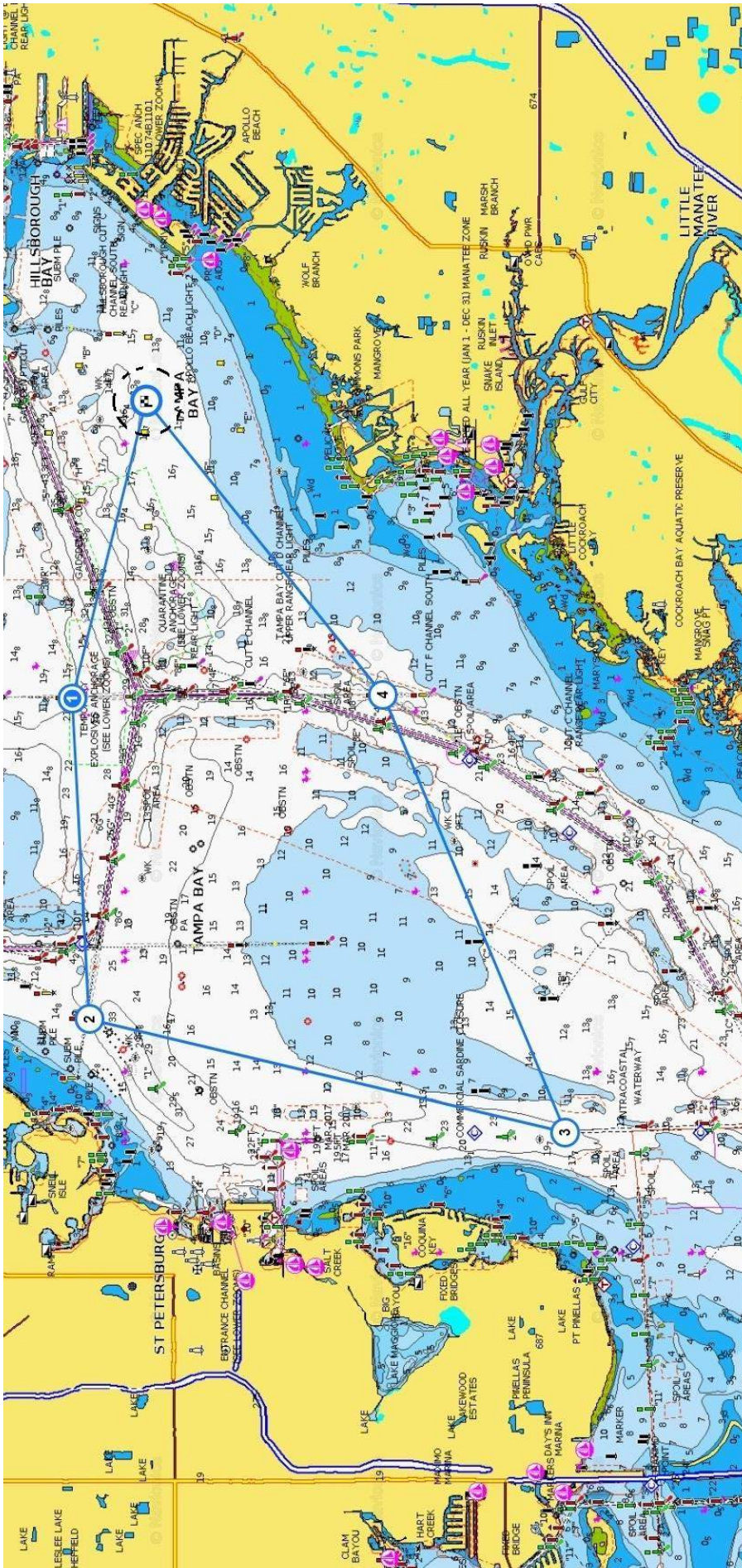
- Leg: 0.25 nm.
- Leg: 2.9nm.
- Leg: 3.4 nm.
- Leg: 2.7 nm.
- Leg: 5.7 nm.

**[Start]** RC boat and Starting Pin located on dashed circle 0.25 nm downwind of Checkered Flag.

**[Checked Flag]** TSS "x" Mark (27.782223, -82.470332). First Mark after Start. Due windward of Starting Line.

Leave Mark to Port if RC displays red shape, or Stbd if green.

- [1]** Range Tower – Cut "F", northbound, front tower (27.795491, -82.523182), Leave to Port.
- [2]** Range Tower – Cut "G", westbound, front tower (27.793006, -82.587142), Leave to Port.
- [3]** Range Tower – Cut "J", southbound, rear tower (27.750832, -82.572132), Leave to Port.
- [Checked Flag]** TSS "x" Mark (27.782223, -82.470332). Finish Line.



**Total Course: 20.75 nm.**

- Leg: 0.25 nm.
- Leg: 2.9 nm.
- Leg: 3.4 nm.
- Leg: 5.2 nm.
- Leg: 5.0 nm.
- Leg: 4.0 nm.

**COURSE D**

[Start] RC boat and Starting Pin located on dashed circle 0.25 nm downwind of Checkered Flag.  
 [Checked Flag] TSS "x" Mark (27.782223, -82.470332). First Mark after Start. Due windward of Starting Line.  
 Leave Mark to Port if RC displays red shape, or Stbd if green.

- [1] Range Tower - Cut "F", northbound, front tower (27.795491, -82.523182). Leave to Port.
- [2] Range Tower - Cut "G", westbound, front tower (27.793006, -82.587142). Leave to Port.
- [3] Channel Marker - Pt. Pinellas, #6, red, flashing, 4 secs. (27.708368, -82.609451). Leave to Port.
- [4] Range Tower - Cut "F", southbound, front tower (27.740905, -82.522683). Leave to Port.
- [Checked Flag] TSS "x" Mark (27.782223, -82.470332). Finish line.





# SAILING INSTRUCTIONS

## Rumgatta Regatta

October 05, 2019

Organized by

Tampa Sailing Squadron, Apollo Beach, Florida

### CRUISER CLASS AND MOTHER LODE

---

#### 1 RULES

The series will be governed by the rules as defined in *The Racing Rules of Sailing, 2017-2020*.

#### 2 NOTICES TO COMPETITORS

Notices to competitors will be posted on the official notice board located by the flagpole at TSS.

#### 3 CHANGES TO SAILING INSTRUCTIONS

3.1 Any change to the sailing instructions will be posted before 0800 on Friday, October 4, or communicated verbally on the water.

3.2 In case of the possibility of severe weather, all inquiries should be made to TSS at 813-645-8377.

#### 4 SIGNALS MADE ASHORE

4.1 Signals made ashore will be displayed from the flagpole at TSS.

4.2 When flag AP is displayed ashore, '1 minute' is replaced by 'not less than 45 minutes'. This changes RRS Race Signal AP.

#### 5 RACING AREAS

Racing areas will be on Hillsborough Bay near Apollo Beach.

#### 6 CHECK-IN

All boats shall pass the stern of the Long Course race committee signal boat, on starboard tack, at least 10 minutes before their time to start, and hail their boat name, sail number, and division or class. VHF check-in will not be permitted, except for boats scheduled to start more than 25 minutes after the pursuit baseline starting time (1100).

NOTE: The Lima flag, "come within hail" will NOT be displayed for this purpose. If the Lima flag is displayed, it will be for a different message, such as a change in the Sailing Instructions.

#### 7 RECALLS

7.1 When an individual recall is signaled, the race committee will attempt to hail boats that are OCS. The timing and order, or omission, of such hails or the failure of a boat to hear a hail will not be considered an improper action or omission of the race committee under rule 62.1.

#### 8 PENALTY SYSTEM

8.1 In all classes the Scoring Penalty of rule 44.3 will replace all Turns Penalties. To accept a Scoring Penalty, a boat must promptly display a yellow flag, and call the race committee's attention to it upon finishing.

#### 9 PROTESTS AND REQUESTS FOR REDRESS

9.1 In addition to the requirements of rule 61.1, a boat intending to protest shall inform the race committee upon finishing or retiring of its intention to protest.

9.2 Protest forms are available at TSS.

9.3 Protests and requests for redress shall be hand-delivered no later than One Hour after the RC Signal Boat docks, to either Principal Race Officer Henry Morse (863-838-1268) or Regatta Chair Gary Mull (813-445-2050).

9.2 Parties and witnesses will be notified of the date, time, and place of the hearing.

#### 10 SAFETY REGULATIONS

10.1 Any boat that challenges a vessel confined to the Tampa Bay shipping channels in such a way as to cause them to file a report, or that violates a moving or static safety or security zone resulting in the filing of a report, will be disqualified. This changes rule 63.1.

10.2 A competitor who intentionally puts trash in the water may be protested by other boats or the race committee.

## **11 RADIO COMMUNICATIONS**

- 11.1 The race committee will monitor VHF channel 68.
- 11.2 A boat leaving the racing area before finishing shall notify the race committee signal vessel over VHF, hailing her name, sail number, and division or class, and receive acknowledgment from the race committee.
- 11.3 Except in an emergency, a boat shall neither make radio transmissions while racing nor receive radio communications not available to all boats. This restriction also applies to mobile telephones.

## **12 PRIZES**

Prizes will be presented on Saturday evening. Final results will be posted after any protest hearings. The final results may affect the awarded prizes.

## **13 SCHEDULE OF RACES**

- 13.1 The baseline starting time will be 1100.
- 13.2 One race is scheduled.

## **14 (not used)**

## **15 COURSES AND MARKS**

- 15.1 The diagrams in the attachment show the courses, including the approximate angles between legs, the order in which marks are to be passed, and side on which each mark is to be left, with one exception.
- 15.2 Exception: TSS mark "x", the first mark after the start, shall be left to port if the RC displays a red shape, or to starboard if a green shape is displayed.
- 15.3 The course to be sailed will be announced at the competitors meeting, posted on the notice board and displayed at the stern of the signal vessel.
- 15.4 The starting mark will be an inflatable mark.

## **16 THE START**

- 16.1 The individual GPS starting times for all boats will be distributed at the competitors meeting and posted on the notice board.
- 16.2 The starting line will be between a staff displaying an orange flag on the Long Course signal vessel at the starboard end, and the course side of the port end starting mark.
- 16.3 The starting line will be located 0.25 nm directly downwind of TSS mark "x". That means it will be somewhere on the dashed circle shown on the courses (attached) around mark "x", in whatever location on that circle that makes it directly downwind of mark "x".
- 16.4 The Class Flag for this group is the # 3 pennant.
- 16.5 Flags and horns will signal the standard 5-minute countdown to the pursuit start baseline time of 1100.

## **17 THE FINISH**

The finish line will be between a staff displaying an orange flag on the Long Course signal vessel and the course side of the finishing mark, which is the last mark of the course.

## **18 TIME LIMIT**

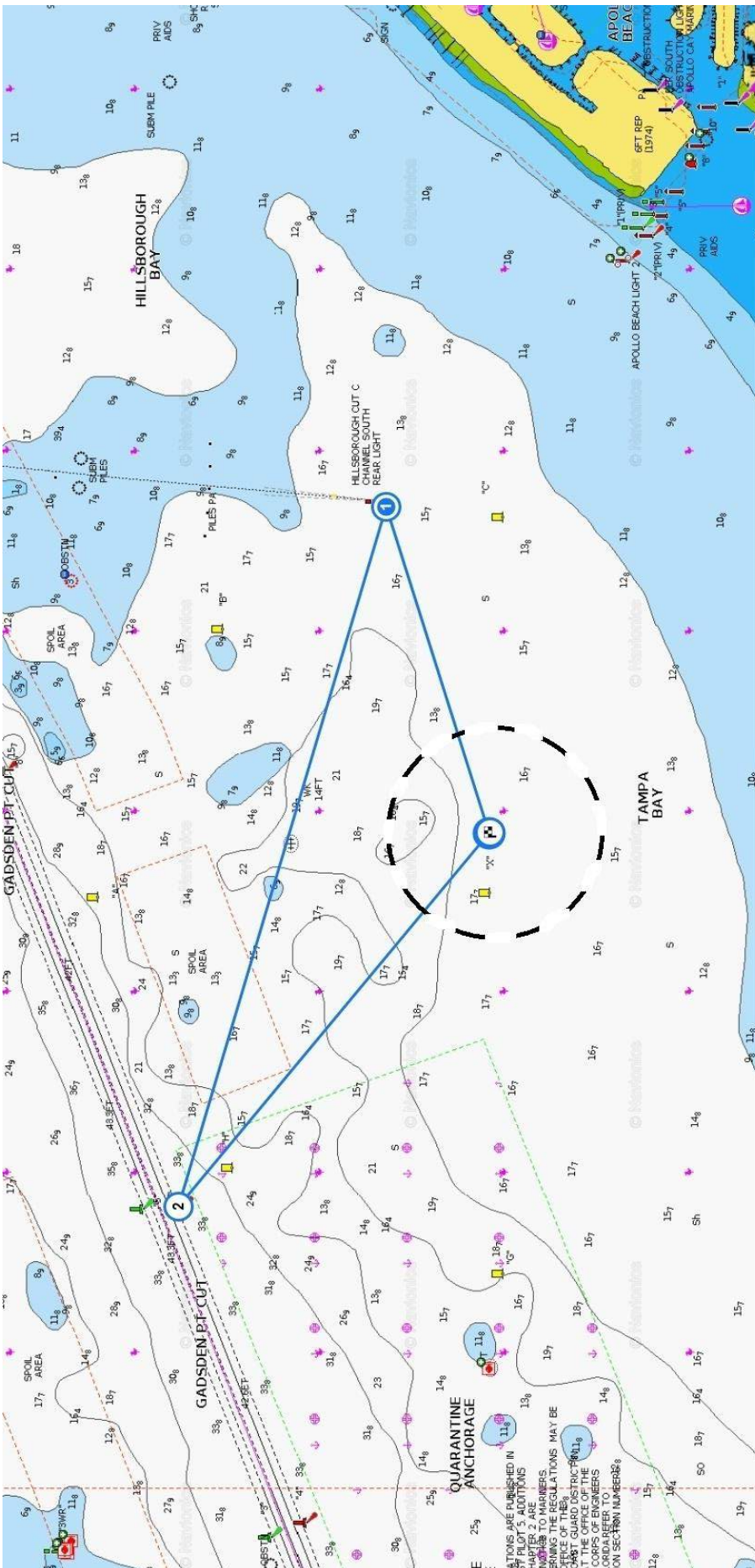
- 18.1 The time limit for all boats to sail the course and finish is 1700.
- 18.3 Boats still racing after 1700 will be scored DNF. This changes rules 35 and A5.

## **19 SCORING**

- 19.1 PHRF time-on-distance will be used to calculate individual starting times.
- 19.2 Unless the course is shortened, each boat's score will be the order she finishes.
- 19.3 If the course is shortened, corrected finish times and order will be calculated using the shortened course length.

Number 3 pennant – Class Flag for this group:





**Total Course: 4.45 nm.**

**COURSE A**

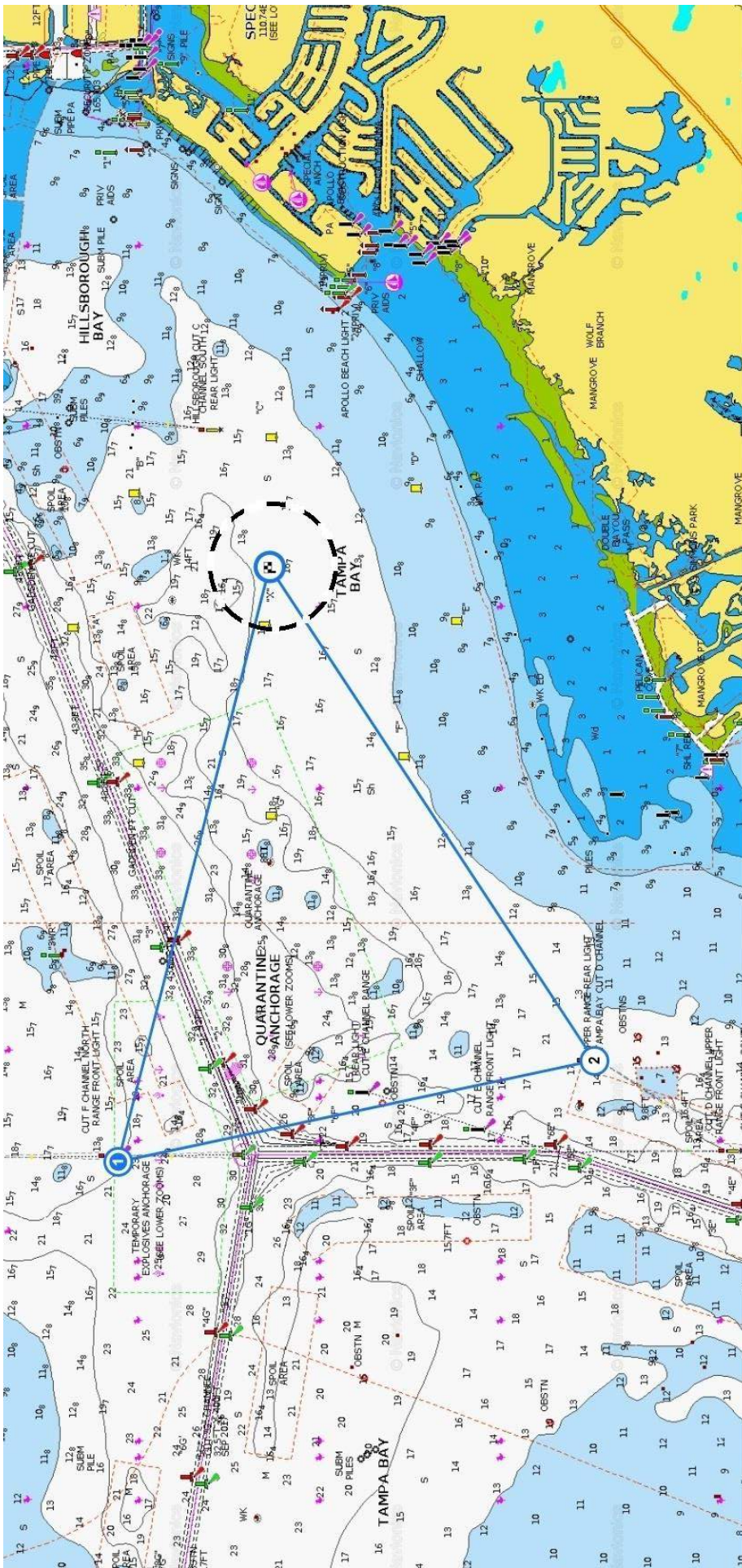
**[Start]** RC boat and Starting Pin located on dashed circle 0.25 nm downwind of Checkered Flag.  
**[Checked Flag]** TSS "x" Mark (27.782223, -82.470332). First Mark after Start. Due windward of Starting Line.  
 Leave Mark to Port if RC displays red shape, or Stbd if green.

**[1]** Range Tower - Cut "C", southbound, rear tower (27.786600, -82.450836). Leave to Port.

**[2]** Channel Marker - Gadsden Pt. #6, red, flshg, 4 secs (27.795524, -82.485984). Leave to Port.

**[Checked Flag]** TSS "x" Mark (27.782223, -82.470332). Finish line.

- Leg: 0.25 nm.
- Leg: 1.1 nm.
- Leg: 1.9 nm.
- Leg: 1.2 nm.



Total Course: 8.65 nm.

**COURSE B**

[Start] RC boat and Starting Pin located on dashed circle 0.25 nm downwind of Checkered Flag.  
 [Checked Flag] TSS "x" Mark (27.782223, -82.470332) First Mark after Start. Due windward of Starting Line.

Leave Mark to Port if RC displays red shape, or Stbd if green.

[1] Range Tower – Cut "F", northbound, front tower (27.795491, -82.523182). Leave to Port.

[2] Range Tower – Cut "D", northbound, rear tower (27.753358, -82.513617). Leave to Port.

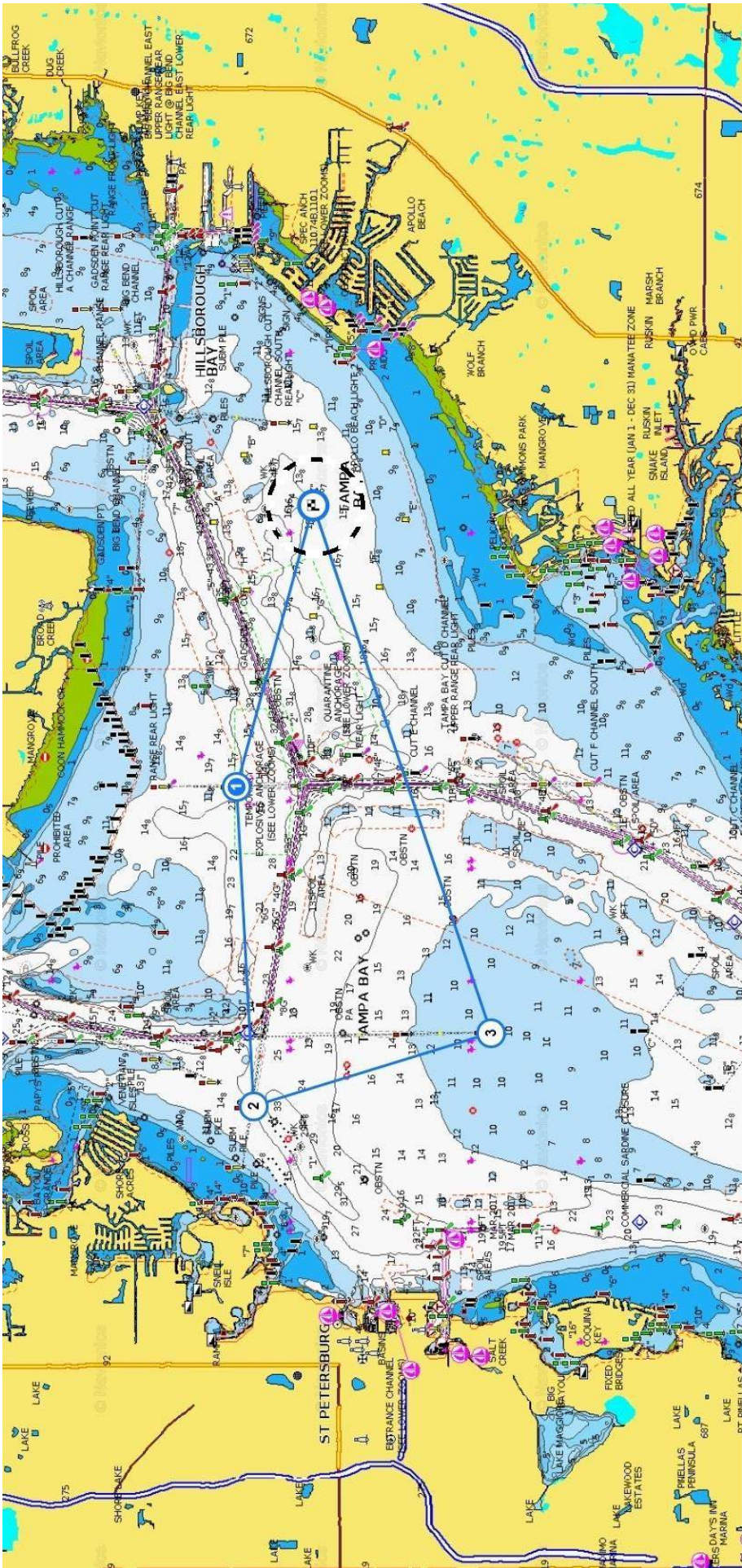
[Checked Flag] TSS "x" Mark (27.782223, -82.470332). Finish line.

Leg: 0.25 nm.

Leg: 2.9 nm.

Leg: 2.6 nm.

Leg: 2.9 nm.



**COURSE C**

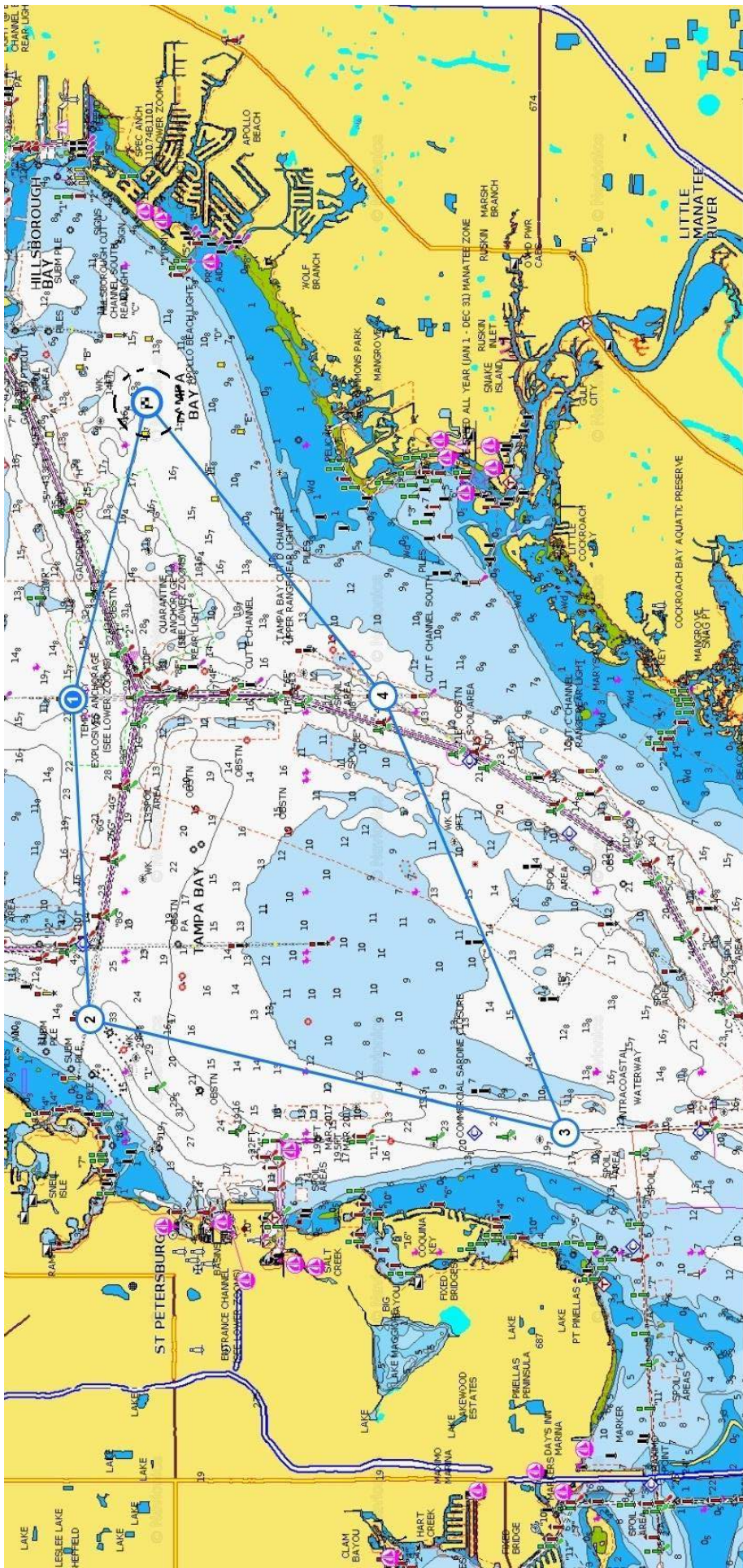
**Total Course: 14.95 nm.**

- Leg: 0.25 nm.
- Leg: 2.9 nm.
- Leg: 3.4 nm.
- Leg: 2.7 nm.
- Leg: 5.7 nm.

**[Start]** RC boat and Starting Pin located on dashed circle 0.25 nm downwind of Checkered Flag.  
**[Checked Flag]** TSS "x" Mark (27.782223, -82.470332). First Mark after Start. Due windward of Starting Line.  
 Leave Mark to Port if RC displays red shape, or Stbd if green.

- [1]** Range Tower - Cut "F", northbound, front tower (27.795491, -82.523182). Leave to Port.
- [2]** Range Tower - Cut "G", westbound, front tower (27.793006, -82.587142). Leave to Port.
- [3]** Range Tower - Cut "J", southbound, rear tower (27.750832, -82.572132). Leave to Port.

**[Checked Flag]** TSS "x" Mark (27.782223, -82.470332). Finish Line.



**COURSE D**

Total Course: 20.75 nm.

- Leg: 0.25 nm.
- Leg: 2.9 nm.
- Leg: 3.4 nm.
- Leg: 5.2 nm.
- Leg: 5.0 nm.
- Leg: 4.0 nm.

[Start] RC boat and Starting Pin located on dashed circle 0.25 nm downwind of Checkered Flag.

[Checked Flag] TSS "x" Mark (27.782223, -82.470332). First Mark after Start. Due windward of Starting Line.

Leave Mark to Port if RC displays red shape, or Stbd if green.

- [1] Range Tower - Cut "F", northbound, front tower (27.795491, -82.523182). Leave to Port.
- [2] Range Tower - Cut "G", westbound, front tower (27.793006, -82.587142). Leave to Port.
- [3] Channel Marker - Pt. Pinellas, #6, red, fishing, 4 secs, (27.708368, -82.609451). Leave to Port.
- [4] Range Tower - Cut "F", southbound, front tower (27.740905, -82.522683). Leave to Port.

[Checked Flag] TSS "x" Mark (27.782223, -82.470332). Finish line.